

Filament catalogue



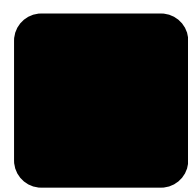
PLA

Tough, easy to use high grade PLA type of filament. 750g spool

In stock



Colour: pure white
RAL: 9003



Colour: pitch black
RAL: 9017



Colour: silver grey
RAL: 9006



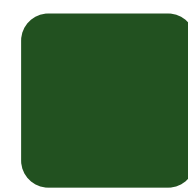
Colour: ocean blue
RAL: 5002



Colour: steel blue
RAL: 5015



Colour: old gold
RAL: 1036



Colour: leaf green
RAL: 6002



Colour: neon pink
fluorescent

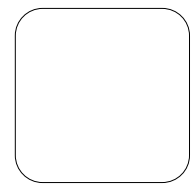


Colour: mars red
RAL: 3020



Colour: lemon yellow
RAL: 1023

Additional wait time (4 weeks)



Colour: transparent



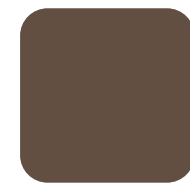
Colour: snow white



Colour: cream white
RAL: 9001



Colour: yellow gold
PANTONE: 466 C



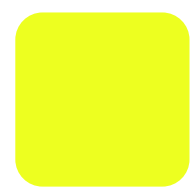
Colour: choco. brown
RAL: 8016



Colour: iron grey
RAL: 7011



Colour: grape purple
RAL: 4005



Colour: sulfur yellow
RAL: 1016



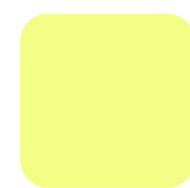
Colour: carrot orange
RAL: 2008



Colour: lime green
RAL: 6018



Colour: bottle green
RAL: 6016



Colour: neon yellow
fluorescent



Colour: neon orange
fluorescent



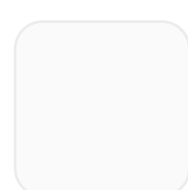
Colour: neon green
fluorescent

* Individual pricing for the custom colour - contact with us.

ABS+

Extra strong impact-resistant filament with zero warp. 750g spool

In stock



Colour: natural milky
RAL: -



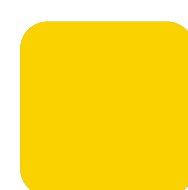
Colour: pitch black
RAL: 9003



Colour: iron grey
RAL: 7011



Colour: mars red
RAL: 3020



Colour: lemon yellow
RAL: 1023

Additional wait time (4 weeks)



Colour: carrot orange
RAL: 2008



Colour: lime green
RAL: 6018



Colour: old gold
RAL: 1036



Colour: silver grey
RAL: 9006

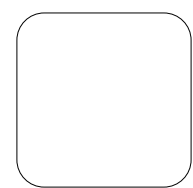


Colour: ocean blue
RAL: 5002

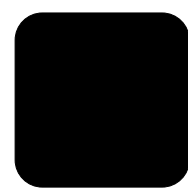
PET-G

Strong, high clarity, odor neutral and easy to print filament. Its high impact strength, excellent flexibility and practically no shrinkage make PET-G an excellent material which combines the advantages of both PLA and ABS. 750g spool

In stock



Colour: transparent



Colour: pitch black
RAL: 9017



Colour: basalt grey
RAL: 7012



Colour: ocean blue
RAL: 5002



Colour: steel blue
RAL: 5015



Colour: mars red
RAL: 3020



Colour: lime green
RAL: 6018

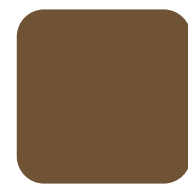
Additional wait time (4 weeks)



Colour: snow white
PANTONE: 656 C



Colour: silver grey
RAL: 9006



Colour: old gold
RAL: 1036



Colour: red
transparent



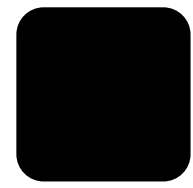
Colour: yellow
transparent



Colour: green
transparent



Colour: neon orange
fluorescent



Colour: black
transparent

TPU

Flexible filament that features an exceptionally high heat resistance and can be stretched as far as 450% before reaching its breaking point. 400g spool

In stock



Colour: pitch black
RAL: 9017



Colour: ocean blue
RAL: 5002

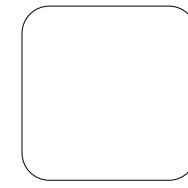


Colour: mars red
RAL: 3020

Additional wait time (4 weeks)



Colour: pure white
RAL: 9003



Colour: transparent



Colour: soft pink
RAL: 3015

